

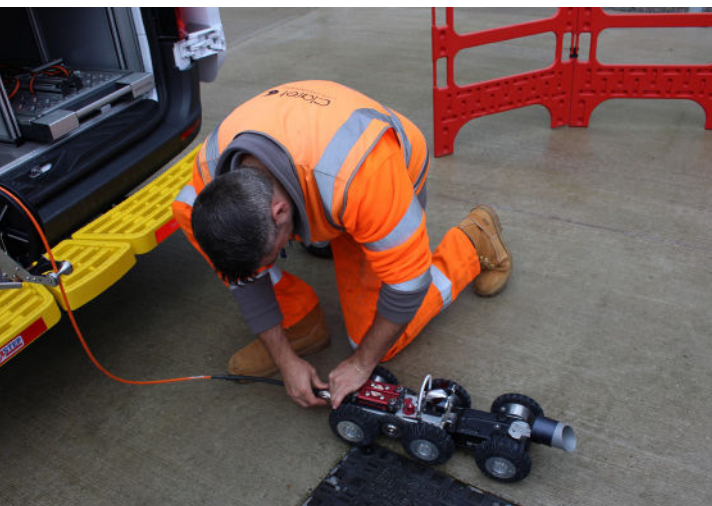
CLARET ENGINEERING FIRST MAINLINE AND PROTEUS LATERAL CRAWLER VAN IN THE UK



Claret Civil Engineering is a multi-disciplinary engineering and construction firm and has expanded into a leading Tier 1 & Tier 2 contractor operating business over the last 25 years. They operate across a range of sectors, such as clean water, water recycling, and pipeline: industrial, housing, and infrastructure projects. Claret continuously invests and develops its business and builds its expertise to incorporate best working practice.

“ The lateral launcher lends itself not only to the obvious lateral inspections to identify this important work but also to locate and raise buried inspection chambers that are connected to the laterals if defects have been established by the lateral launcher surveys. So many times, have we been unable to locate chambers in the past and have missed out on surveying many kilometres of lateral connections. This cutting-edge technology will give us that capability to deliver more for future projects. ”

Scott Weston
Contracts Manager
Claret Civil Engineering



Claret has recently invested in a new partnership with Minicam to create the first mainline and Proteus Lateral crawler van in the UK. It was agreed upon after our demonstrations at No-Dig Live 2022. Claret is currently working on a “Drive & Reward” *Anglian Water* contract which is a predominately proactive surveying campaign that is to find structural defects within sewer networks where flooding and pollution have been an issue within certain regions. The idea behind “Drive & Reward” is to rehabilitate those defects found with either trenchless technologies, open-cut replacement, manhole refurbishment or simple cleaning.

Continue on next page...

By having the Proteus Lateral System as part of their fleet, they will be able to inspect lateral pipes, cross bores, inflows and more. The LAT150 crawler offers range, reliability, and functionality. It offers a multitude of options to help overcome challenging situations and give complete control of each launch.



Minicam's in-house team of technicians and joiners needed to place the Lateral Launch and Mainline System on the van without exceeding the vans weight limit. To do this, elements of the van were stripped back and redesigned with weight saving features and materials, incorporating aluminium extrusion in place of heavy plywood timbers and switching our standard batteries for lithium batteries allowing considerable weight to be saved. Weighing each component as the build progressed allowed the team to track overall weight and make essential changes where necessary.

The additional weight saving also allowed for additional storage for equipment needed by Clarets team. They procured a long-base sprinter, which has reduced payload compared to the medium-based sprinter typically used. For the design, they adapted Minicam's standard fit-out whilst also taking inspiration from the EuroVan, which was created in early 2022, all while keeping up Minicam's ethos for quality workmanship.

For more information about Minicam's Lateral Crawler contact us:

Phone
+44 (0) 1942 270524

Email
info@minicam.co.uk

Visit
www.minicam.co.uk